

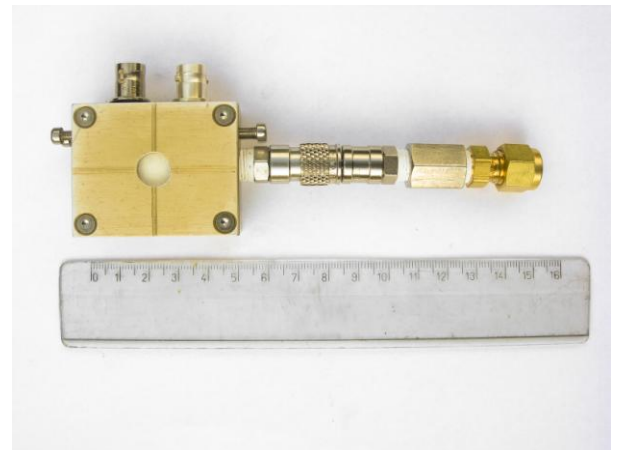
Compact Ion Chamber

This ionization chamber has been designed for X-ray beam monitoring at Synchrotron facilities. The compact nature of this ionization chamber (20 x 30 mm) enables this device to be placed almost anywhere. The ion chamber enclosure is made of stainless steel with SHV and BNC electrical connectors, and a gas connector. The sparking voltage is approximately 1000V.

This chamber is used for direct comparison of radiation source strengths and beam monitoring in accelerator facilities.

Benefits

- Small size
- High linearity
- Safe, sealed gas volume



Specifications

Wall Materials:	Stainless Steel
Signal Connector:	BNC
Signal Output:	3.4×10^6 R/coul for air with Cs137
Recommended Signal Cable:	Low noise coaxial
High Voltage Requirements:	Positive , 250 to 500 V depending on gas fill.
High Voltage Connector:	MHV
High Voltage Cable:	RG-59/U or equivalent
Overall Size:	20 x 30 mm